



UK Health
Security
Agency

Adverse Weather and Health Plan (AWHP) Micro Course

Agostinho Sousa, MD MPH FFPH

Head of the Extreme Events and Health Protection
UKHSA Centre for Climate and Health Security

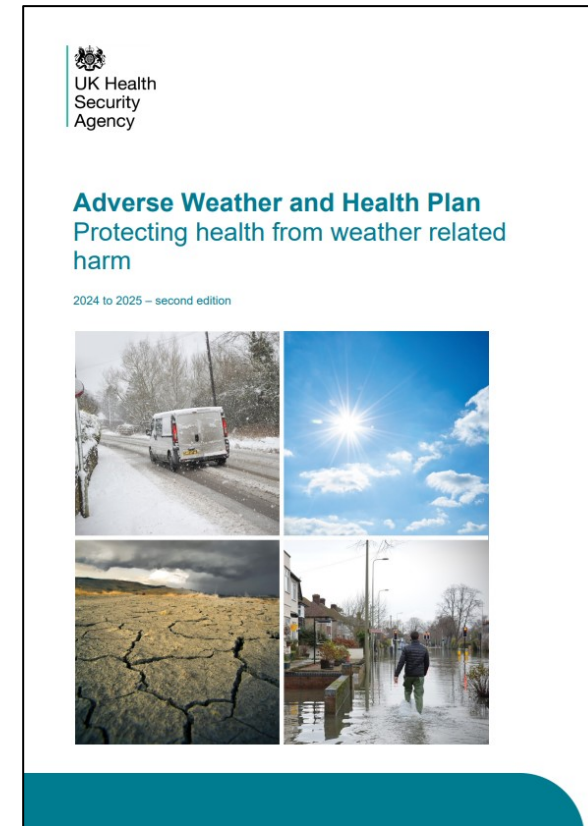
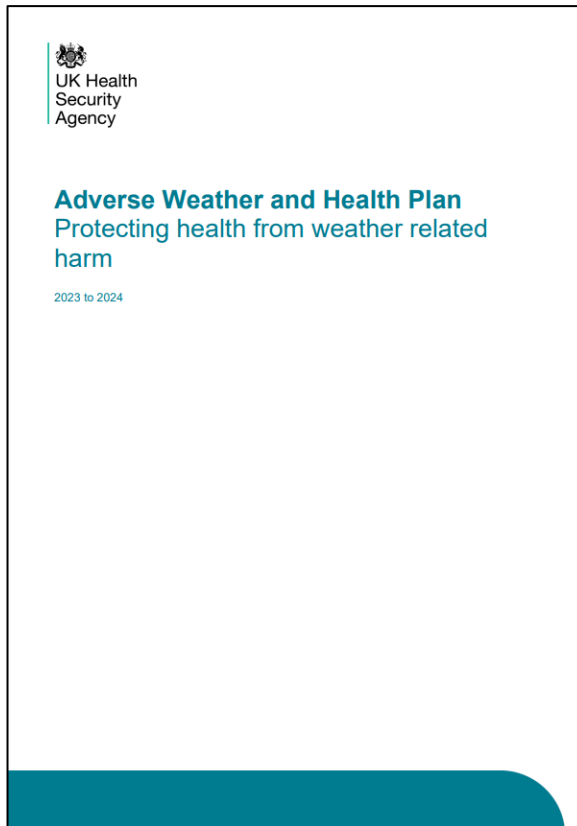
Aim and Learning outcomes

Aim - To confirm that you have a basic knowledge of the AWHP

Learning outcomes - By the end of the session, you will be able to:

- Outline the four key components of the AWHP
- Identify the weather hazards covered by the AWHP
- Locate the current guidance in the gov.uk website
- Outline areas of improvement of possible organisational processes considering the AWHP

AWHP development

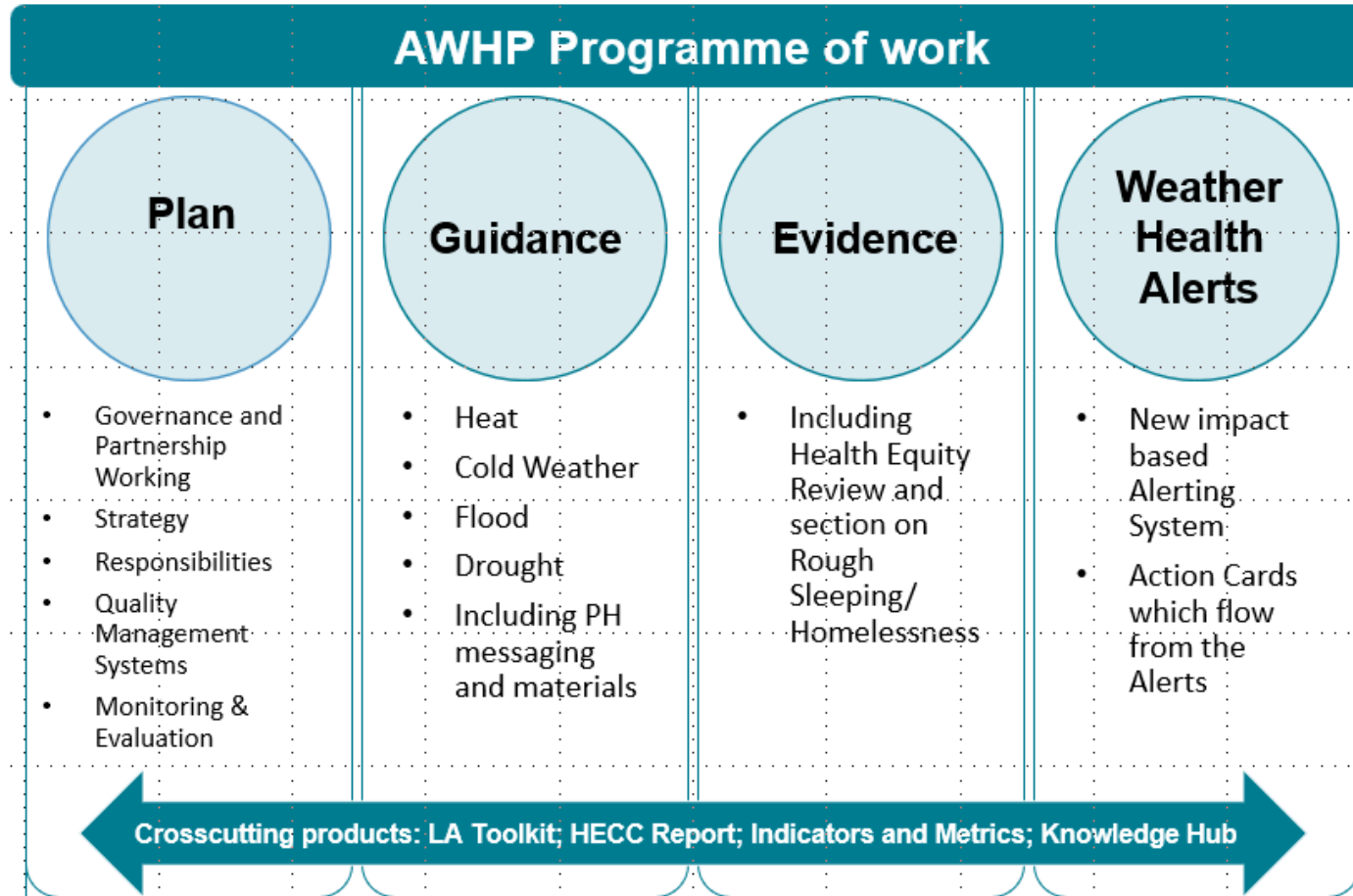


Goals



- Prevent the increase in years of life lost due to adverse weather events
- Prevent mortality due to adverse weather events
- Prevent morbidity due to adverse weather events
- Reduce the use of healthcare services due to adverse weather events

AWHP Programme of Work



Weather hazards covered by the AWHP



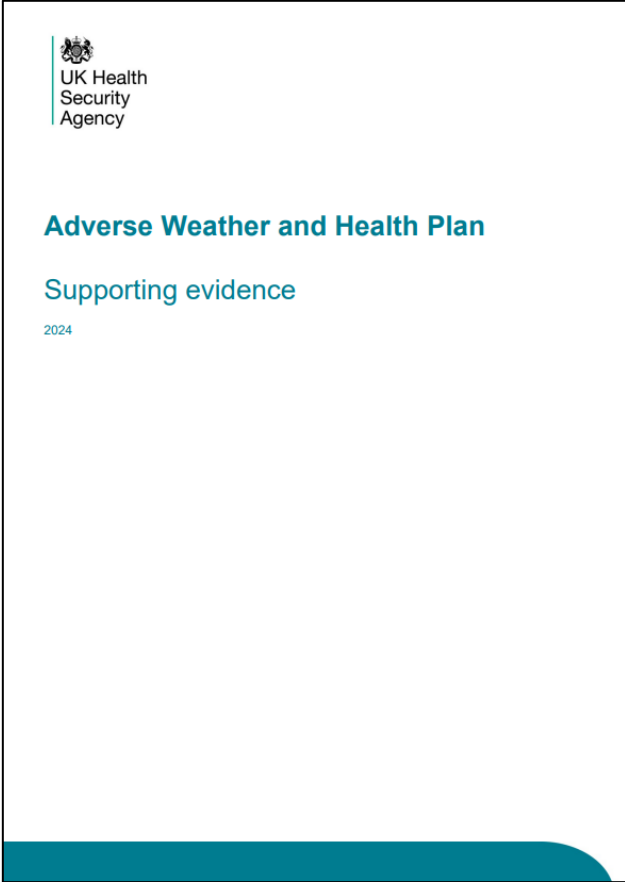
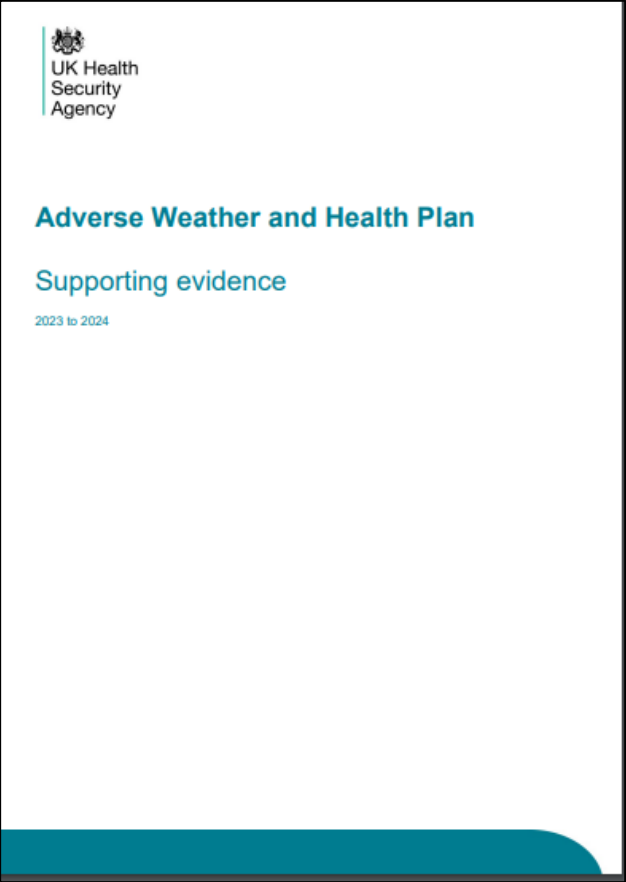
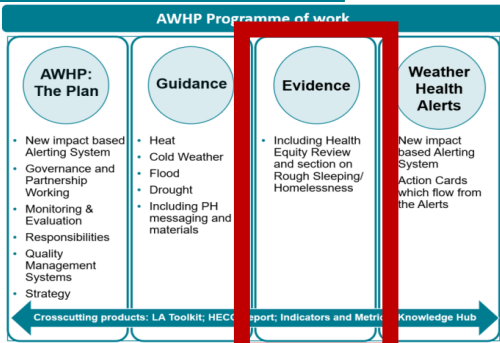
Included in the NRR

- High temperatures and heatwaves (Heat)
- Low temperatures and snow (Cold)
- Coastal flooding (Flooding)
- Fluvial flooding (Flooding)
- Surface water flooding (Flooding)
- Drought
- Storms (AWHP 2024-2025)

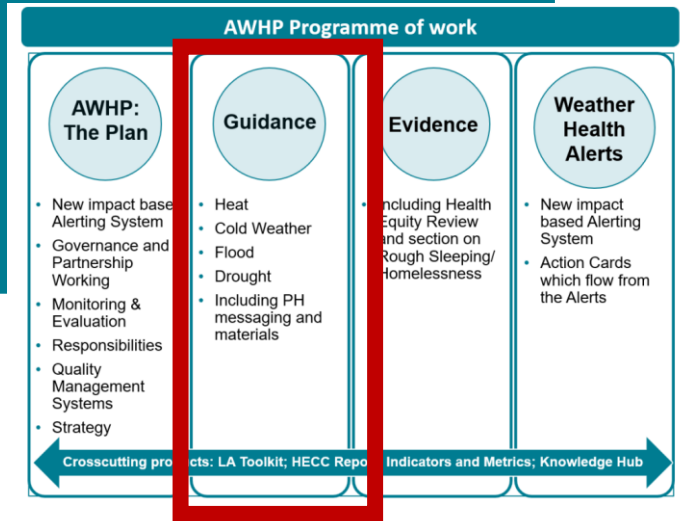
Not included in NRR

- Thunderstorm asthma (AWHP 2024-2025)

Support evidence document



AWHP Guidance and GOV.UK



https://www.gov.uk/government/publications/adverse-weather-and-health-plan

GOV.UK

Home > Health and social care > Public health > Health protection > Emergency response

Guidance

Adverse Weather and Health Plan

The Adverse Weather and Health Plan aims to protect individuals and communities from the health effects of adverse weather and to build community resilience.

From: [UK Health Security Agency](#)
Published 27 April 2023
Last updated 6 November 2023 — [See all updates](#)

[Get emails about this page](#)

Applies to England

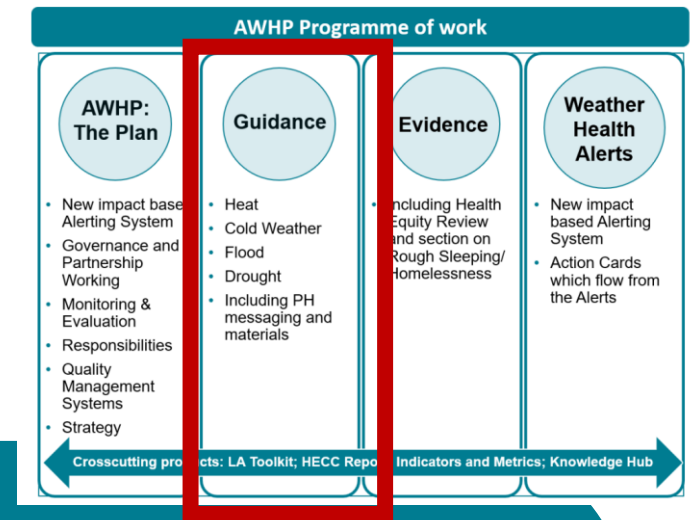
A [joint statement](#) underscoring the AWHP, Heat Health Alerts, and its aims to keep people safe during the coming and future summers has been developed in partnership with the Department of Health and Social Care, NHS England, the Met Office, and the Local Government Association. It is available on the NHS England website.

Further resources

- [AWHP: heat advice](#)
- [AWHP: cold weather advice](#)
- [Weather-Health Alerting System](#)
- [Flooding: health guidance and advice](#)
- [Public health impact of drought: advice for the public](#)



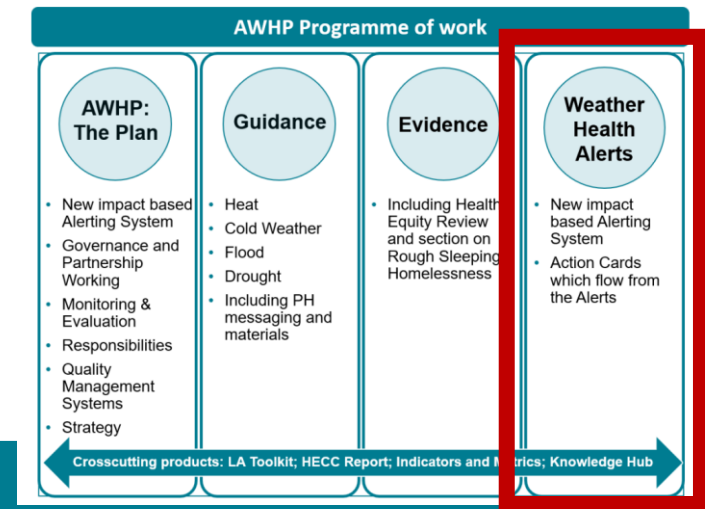
UK Health
Security
Agency



Guidance Appendices

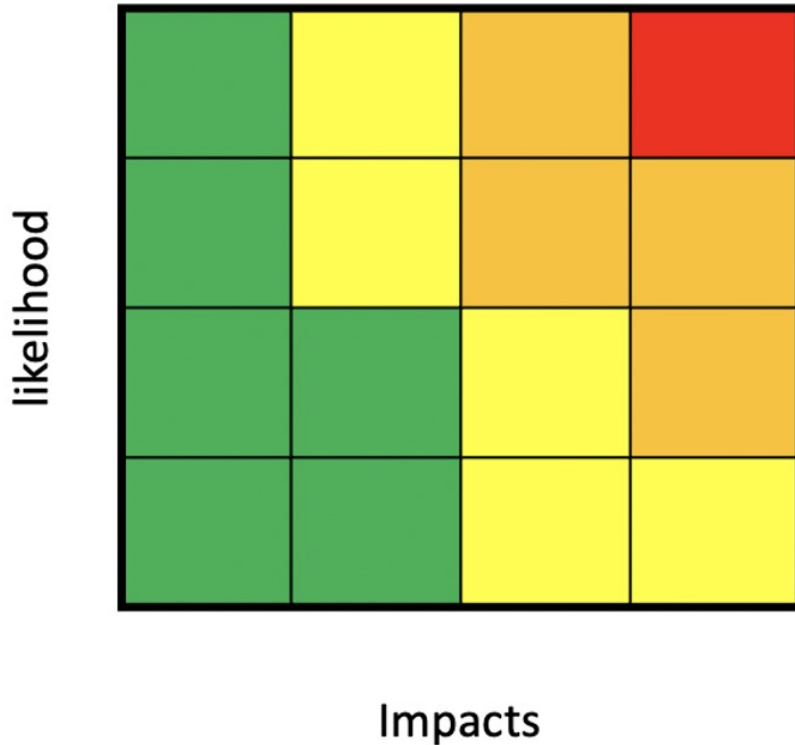
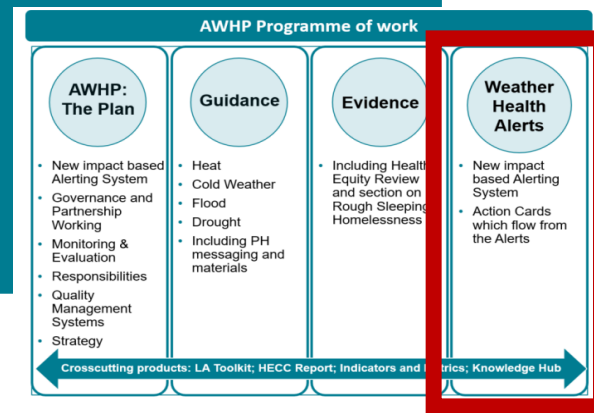


UK Health
Security
Agency



The Weather-Health Alerting System

Weather-Health Alerting System



- Heat-health alert (HHA) operates from 1 June to 30 September and the cold-health alert (CHA) operates from 1 November to 30 March.
- Improved flexibility within the alerts to provide information on expected impacts as a result of the weather conditions
- Aligned with Met Office NSWWS Extreme Heat Warnings
- Moving away from HHA Levels (0-4)

Weather-Health Alerting System Dashboard

UK Health Security Agency

Weather-Health Alerts
Heat-Health Alerts

Met Office

There is a Yellow alert in the following regions: EM, WM, SE, SW, EoE, Lon, YH and is in effect between 23/06/2023 at 09:00:00 and 26/06/2023 at 09:00:00

There are currently no amber alerts

There are currently no red alerts

NW= North West NE= North East YH= Yorkshire and The Humber WM= West Midlands EM= East Midlands EoE= East of England SE= South East Lon= London SW= South West

Weather-Health Alerts

Search

United Kingdom

Ireland

Wales

Cardiff

London

Netherlands

Belgium

mapbox

Advice and information from the UKHSA:

- User guide to use of impact based Heat-Health Alerts system

UKHSA Action Cards

- Heat-Health Alert Action card for the voluntary and community sector
- Heat-Health Alert Action card for commissioners
- Heat-Health Alert Action card for providers
- Heat-Health Alert Action card for national government

Further Advice and guidance

- UKHSA Advice Weather and Health Plan and supporting evidence
- Hot weather and Health supporting vulnerable people
- Find the latest weather forecasts and warnings
- Met Office National Severe Weather Warnings Service
- Flood Alerts and Warnings

To aid local planning, Local Resilience Forum (LRFs) and their regions can be found here: [Guidance - Local Resilience Forums: Contact Details](#).

Expected Impacts

Significant impacts are possible across the health and social care sector due to the high temperatures, including: observed increase in mortality across the population likely, particularly in the 65+ age group or those with health conditions, but impacts may also be seen in younger age groups; increased demand for remote health care services likely; internal temperatures in care settings (hospitals and care homes) may exceed recommended threshold for clinical risk assessment; impact on ability of services to be delivered due to heat effects on workforce possible and many indoor environments likely to be overheating, risk to vulnerable people living independently in community as well as in care settings.

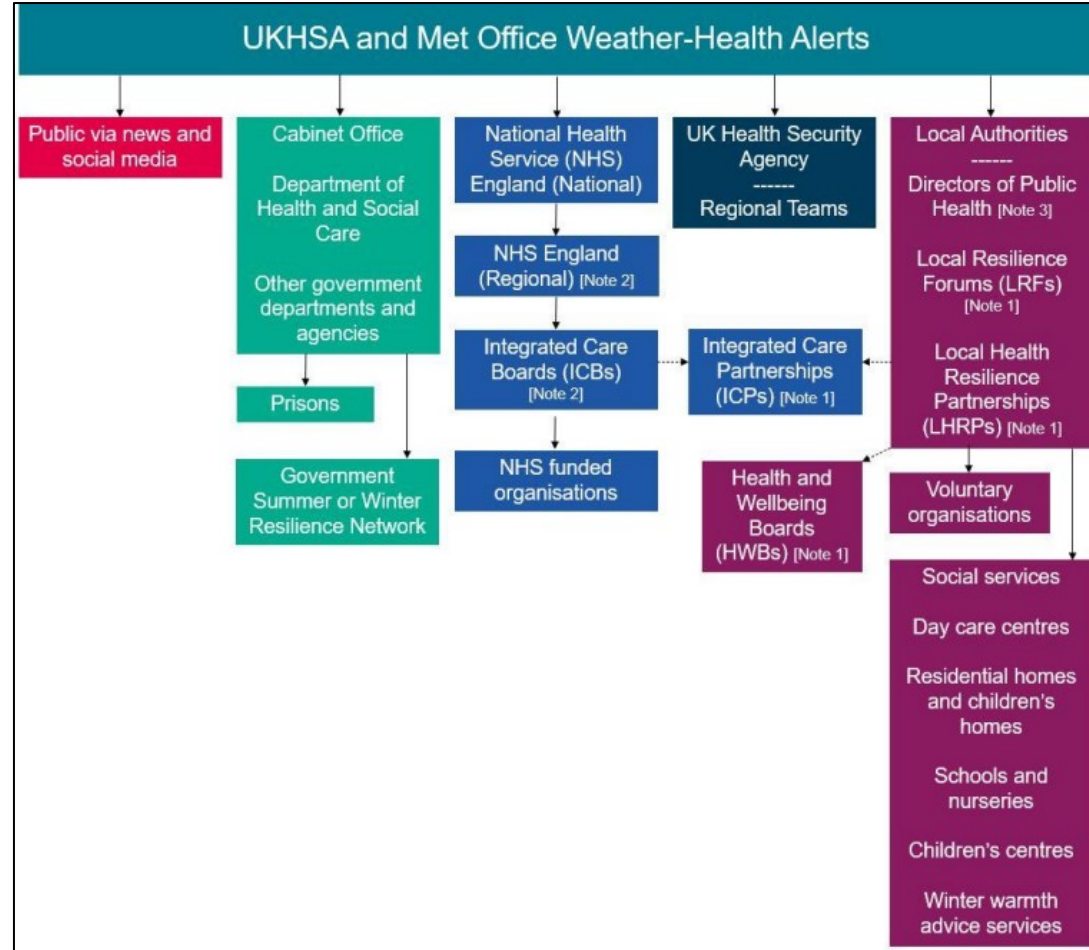
National Weather Overview

Recent warm daytime temperatures are expected to rise further from Friday, with night-time temperatures also becoming warm and feeling humid. The focus of the very warm temperatures will initially be across East Midlands, East of England, Southeast and London, but becoming widespread across most regions on Saturday. The main exceptions will be the far northeast and the northern parts of northwest, which may see cloud and rain moving east, and also the far southwest due to fresher winds. Cloudier weather follows Sunday with the chance of heavy, thundery showers, however very warm temperatures are expected to persist for many. The hottest temperatures are expected to be across the East of England, ...

Other Useful Information

- Dedicated dashboard is available on gov.uk
<https://www.gov.uk/guidance/whether-health-alerting-system>
- Provide national and regional situational awareness on current alerting status
- Links to additional information, advice, guidance and action cards

Alerts cascade





UK Health
Security
Agency

Self-assessment Quiz

Aim and Learning outcomes

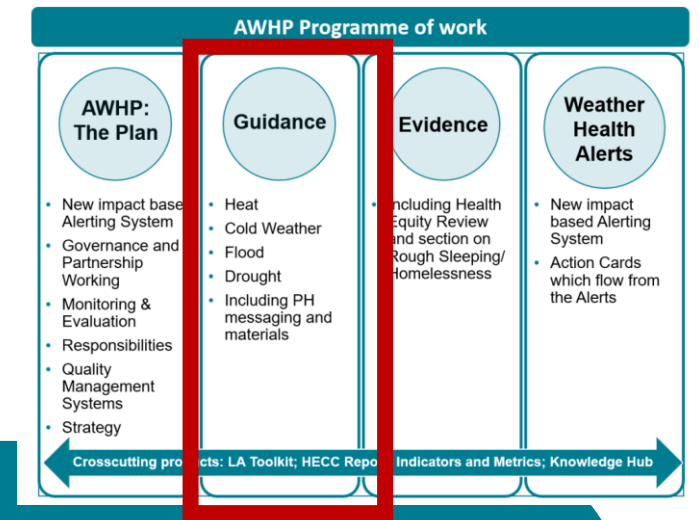
Aim - To confirm that you have a basic knowledge of the AWHP

Learning outcomes - By the end of the session, you will be able to:

- Outline the four key components of the AWHP
- Identify the weather hazards covered by the AWHP
- Locate the current guidance in the gov.uk website
- Outline areas of improvement of possible organisational processes considering the AWHP



UK Health
Security
Agency



Guidance Appendices

Hot weather and health resources

Hot weather and health: [guidance and advice](#)

General guidance

- Hot Weather and Health Guidance for the Public: [Beat the Heat](#) (Guidance, home checklist and poster)
- Also available in [العربية](#); [বাংলা](#); [Español](#); [ଓଡ଼ିଆ](#); [Italiano](#); [ਪੰਜਾਬੀ ਗੁਰਮੁਖੀ](#); [Polski](#); [Português](#); [Română](#) ; [Українська](#); [اردو](#)

Area-specific guidance - Hot weather and health: [supporting vulnerable people](#)

- Hot Weather and Health Guidance for [Healthcare Professionals](#)
- Hot Weather and Health Guidance for [Care Home Managers and Social Care Staff](#)
- Hot Weather and Health Guidance for [Looking after children and early years settings](#)
- Hot Weather and Health Guidance for [Supporting people homeless and sleeping rough](#)
- Hot Weather and Health Guidance [for Organisers of Mass Gatherings](#)

Heat-Health Alert [action cards](#)

- [Commissioner and local authorities](#)
- [Health and social care Providers](#)
- [Voluntary and community sector organisations](#)

For downloadable [summary posters](#), go to:

- Action card for [commissioners](#)
- Action card for [voluntary and community sector](#)
- Action card for [care homes and other residential settings](#)
- Action card for [services delivering care to people in their homes](#)
- Action card for [hospitals and other healthcare settings](#)

Cold weather and Health resources

Cold weather and guidance

General guidance

- Cold Weather and Health Guidance for the Public: [Keep warm and well](#) (Guidance, home checklist and poster)
- Also available in [العربية](#); [বাংলা](#); [Español](#); [ଝିଝିଧନ](#); [Italiano](#); [ਪੰਜਾਬੀ ਗੁਰਮੁਖੀ](#); [Polski](#); [Português](#); [Română](#); [Українська](#); [اردو](#)

Area-specific guidance

- [Supporting vulnerable people before and during cold weather: healthcare professionals](#)
- [Supporting vulnerable people before and during cold weather: for adult social care managers](#)
- [Supporting vulnerable people before and during cold weather: people homeless and sleeping rough](#)
- [Looking after children and those in early years settings before and during cold weather: teachers and other educational professionals](#)

Cold-Health Alert action cards

- [Commissioner and local authorities](#)
- [Health and social care Providers](#)
- [Voluntary and community sector organisations](#)

Cold-Health Alert Warm spaces in England toolkit

- [Warm spaces in England: an evidence review and toolkit for local organisations](#)

Capacity building

- [E-module on cold homes and health for frontline practitioner - Helping People Living in Cold Homes](#)

For downloadable [summary posters](#), go to:

- Action card for [commissioners](#)
- Action card for [voluntary and community sector](#)
- Action card for [care homes and other residential settings](#)
- Action card for [services delivering care to people in their homes](#)
- Action card for [hospitals and other healthcare settings](#)

Flooding and Health guidance

1. Public advice on Flooding and Health

- Health impacts of flooding
- Cleaning your home safely

Also available in [العربية](#); [বাংলা](#); [Español](#); [ଓଡ଼ିଆ](#); [Italiano](#); [ਪੰਜਾਬੀ ਗੁਰਮੁਖੀ](#); [Polski](#); [Português](#); [Română](#); [Українська](#); [اردو](#)

2. Flooding and Health: a guide for the assessment and management of public health impacts for frontline responders

- Health impacts of flooding
- Identifying who is at risk
- Public health considerations in preparedness, response and recovery
- Assessment and management of physical and mental health risks
- Best practice recommendations during cleaning up process

Drought and Health guidance

Public health impact of drought: advice for the public

- Stay informed
 - Maintain hygiene during a drought period
 - Stay hydrated
 - Look after your mental health
 - Reduce respiratory problems
 - Use water efficiently
-
- Also available in [العربية](#); [বাংলা](#); [Español](#); [જોર્જિયન](#); [Italiano](#); [ਪੰਜਾਬੀ ਗੁਰਮੁਖੀ](#); [Polski](#); [Português](#); [Română](#); [Українська](#); [اردو](#)