



# Our next steps

We are **engaging with the local community** prior to submitting our main detailed planning application. Find out the next steps for PHE Harlow and how to give your feedback.

Thank you for visiting our virtual exhibition to find out more about the latest plans for PHE Harlow. We hope you found it useful and informative.

Our next steps include submitting a final detailed planning application to Harlow Council in July 2020. We anticipate starting main construction early next year.

Your feedback is important to us and we encourage you to complete the digital feedback form in the virtual exhibition or contact us via phone or email.

### Did You Know?

PHE Harlow was granted outline planning permission in 2017. This only secured the principle of the development. The application we're about to submit sets out the latest detailed design and layout, landscaping and materials.



### Have your say

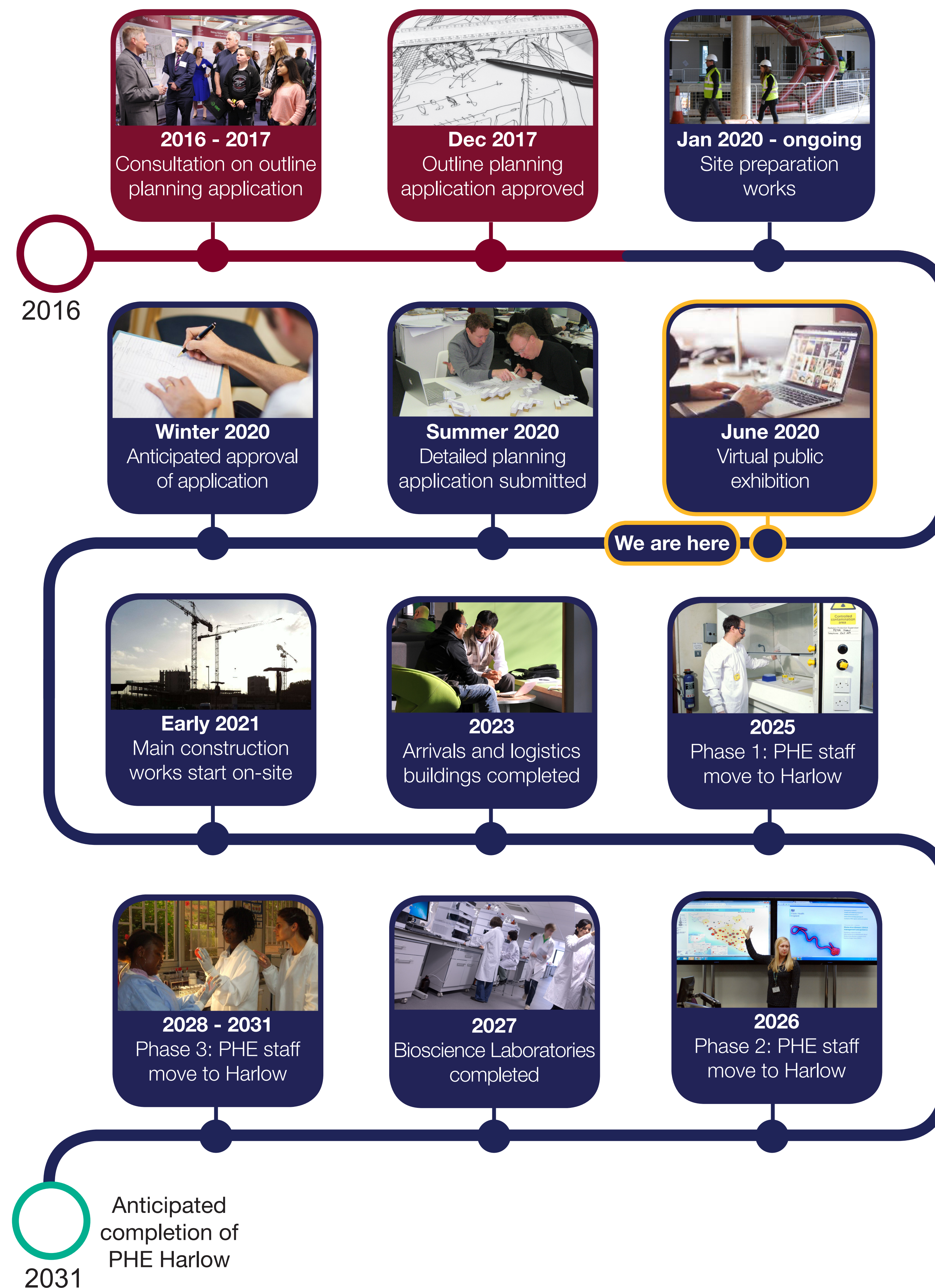
Your feedback is important to us and we encourage you to complete the digital feedback form in the virtual exhibition, or contact us via phone or email.

Complete feedback form in the virtual exhibition

[pheharlow@phe.gov.uk](mailto:pheharlow@phe.gov.uk)

0800 228 9100

The feedback period is open from Friday 5 June until midnight on Friday 19 June 2020.



Indicative image of the Arrivals and Education Centre at night



Indicative image inside the Arrivals and Education Centre