



1 of 2

S. aureus (MRSA & MSSA) bacteraemia and *C. difficile* infections

MRSA bacteraemia

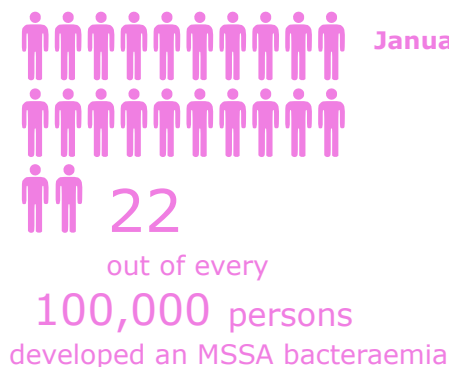


January-March 2018

January-March 2019

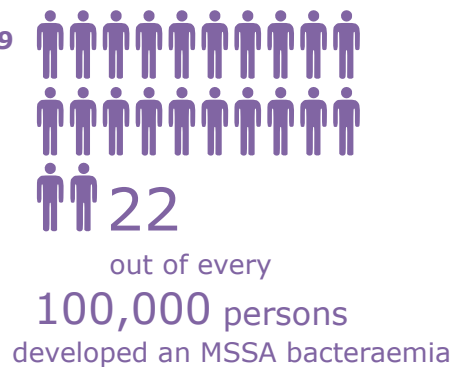


MSSA bacteraemia

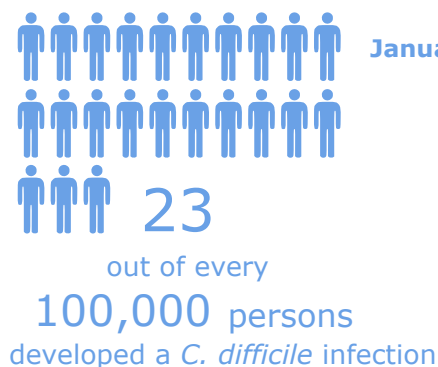


January-March 2018

January-March 2019

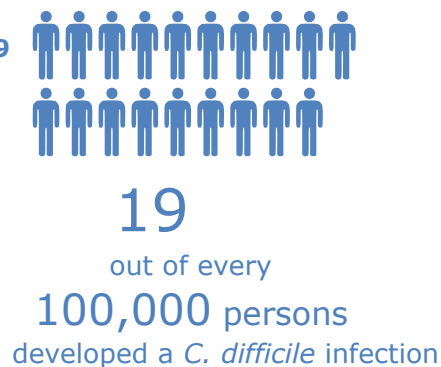


C. difficile infection



January-March 2018

January-March 2019



2 of 2

Gram-negative bacteraemias (*E. coli*, *Klebsiella* spp. and *P. aeruginosa*)

P. aeruginosa bacteraemia



7

January-March 2018

out of every

100,000 persons

developed a *P. aeruginosa* bacteraemia

January-March 2019



7

out of every

100,000 persons

developed a *P. aeruginosa* bacteraemia

Klebsiella spp. bacteraemia



16

January-March 2018

out of every

100,000 persons

developed a *Klebsiella* spp. bacteraemia

January-March 2019



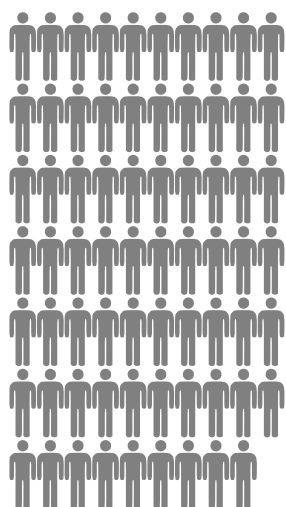
19

out of every

100,000 persons

developed a *Klebsiella* spp. bacteraemia

E. coli bacteraemia



69

January-March 2018

out of every

100,000 persons

developed an
E. coli bacteraemia

January-March 2019

75

out of every

100,000 persons

developed an
E. coli bacteraemia

