



1 of 2

S. aureus (MRSA & MSSA) bacteraemia
and *C. difficile* infections

MRSA bacteraemia

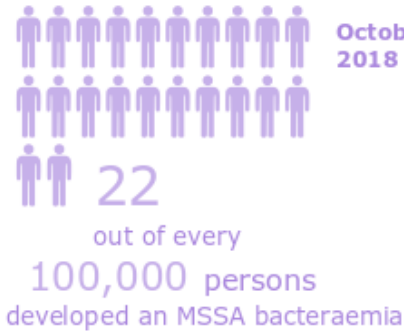


October-December
2018

October-December
2019

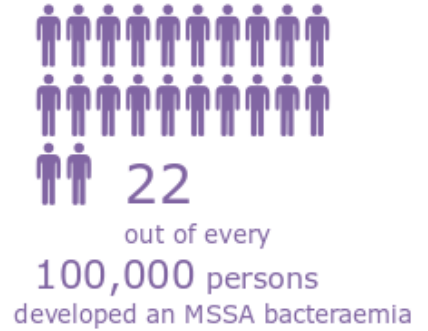


MSSA bacteraemia

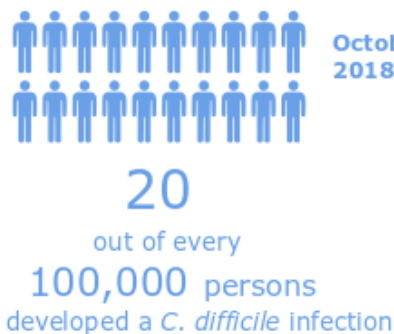


October-December
2018

October-December
2019

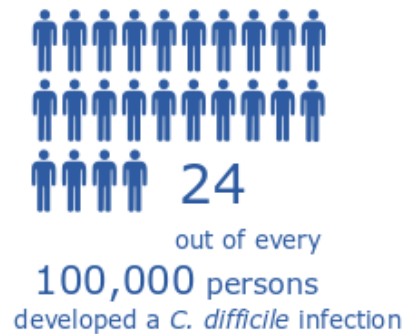


C. difficile infection



October-December
2018

October-December
2019





Quarterly Epidemiological Commentary: mandatory MRSA, MSSA and Gram-negative bacteraemias, and *C. difficile* infection

(data up to October - December 2019)

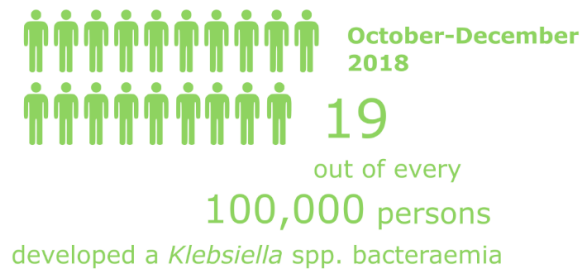
2 of 2

Gram-negative bacteraemias (*E. coli*, *Klebsiella* spp. and *P. aeruginosa*)

P. aeruginosa bacteraemia



Klebsiella spp. bacteraemia



E. coli bacteraemia

