



1 of 2

## *S. aureus* (MRSA & MSSA) bacteraemia and *C. difficile* infections

### MRSA bacteraemia

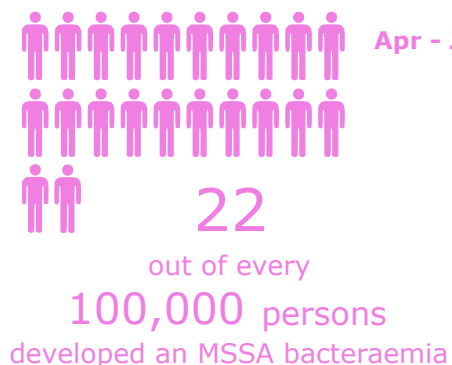


Apr - Jun 2019

Apr - Jun 2020

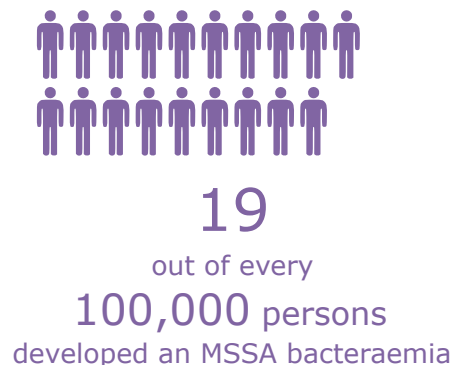


### MSSA bacteraemia

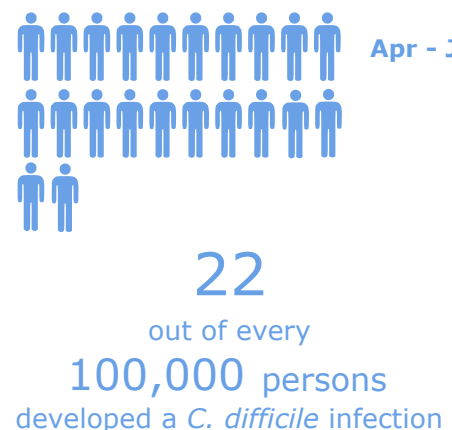


Apr - Jun 2019

Apr - Jun 2020

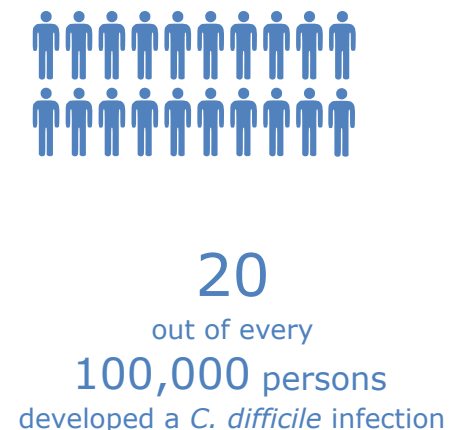


### *C. difficile* infection



Apr - Jun 2019

Apr - Jun 2020





2 of 2

## Gram-negative bacteraemias (*E. coli*, *Klebsiella* spp. and *P. aeruginosa*)

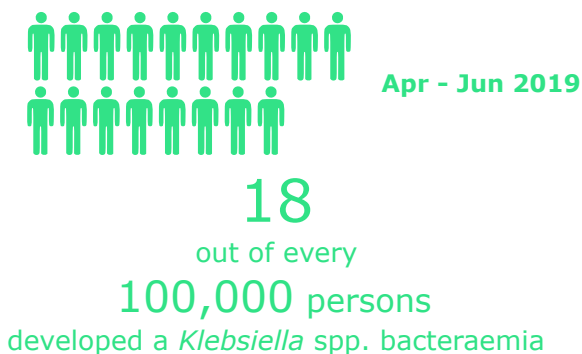
### *P. aeruginosa* bacteraemia



Apr - Jun 2020



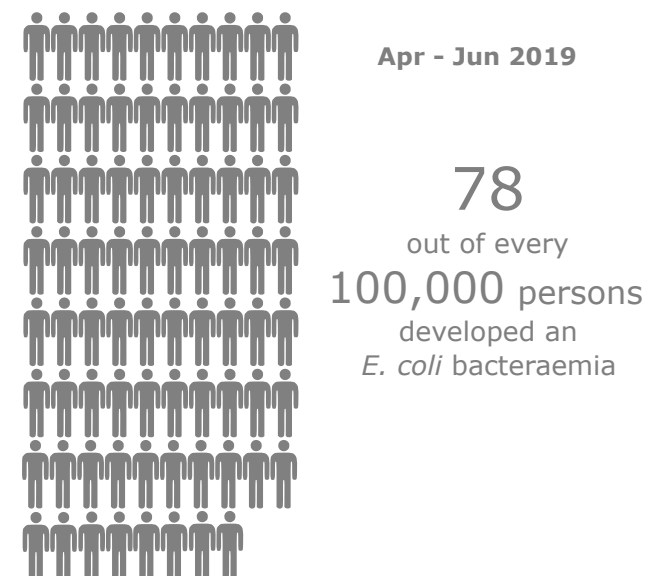
### *Klebsiella* spp. bacteraemia



Apr - Jun 2020



### *E. coli* bacteraemia



Apr - Jun 2020

