



### *S. aureus* (MRSA & MSSA) bacteraemia and *C. difficile* infections

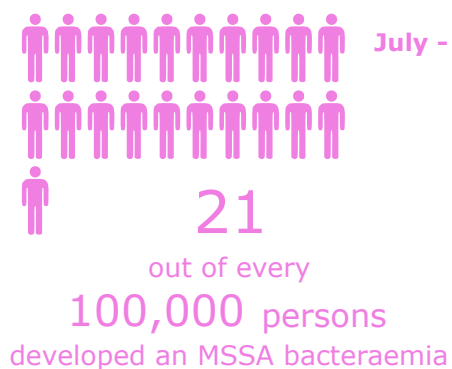
#### MRSA bacteraemia



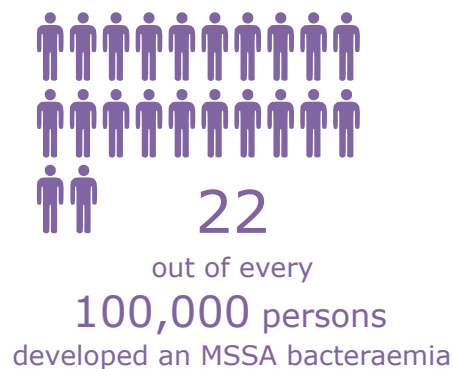
July - Sep 2019



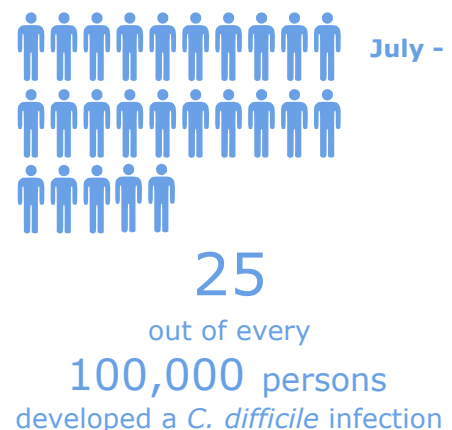
#### MSSA bacteraemia



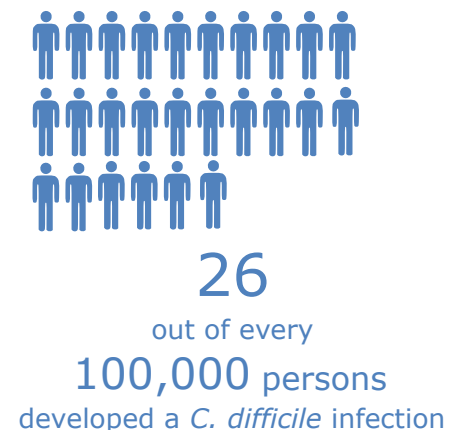
July - Sep 2019



#### *C. difficile* infection



July - Sep 2019





2 of 2

## Gram-negative bacteraemias (*E. coli*, *Klebsiella* spp. and *P. aeruginosa*)

### *P. aeruginosa* bacteraemia



July - Sep 2018

8 out of every

100,000 persons

developed a *P. aeruginosa* bacteraemia

July - Sep 2019

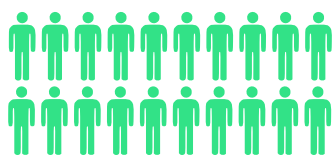


8 out of every

100,000 persons

developed a *P. aeruginosa* bacteraemia

### *Klebsiella* spp. bacteraemia



July - Sep 2018

20

out of every

100,000 persons

developed a *Klebsiella* spp. bacteraemia

July - Sep 2019



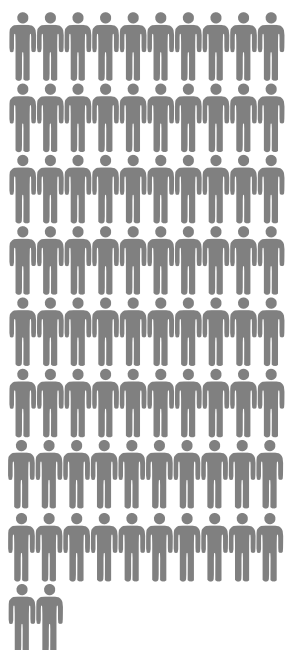
21

out of every

100,000 persons

developed a *Klebsiella* spp. bacteraemia

### *E. coli* bacteraemia



July - Sep 2018

82

out of every

100,000 persons

developed an *E. coli* bacteraemia

July - Sep 2019

84

out of every

100,000 persons

developed an *E. coli* bacteraemia

