



(data up to July - September 2020)

1 of 2

## *S. aureus* (MRSA & MSSA) bacteraemia and *C. difficile* infections

### MRSA bacteraemia

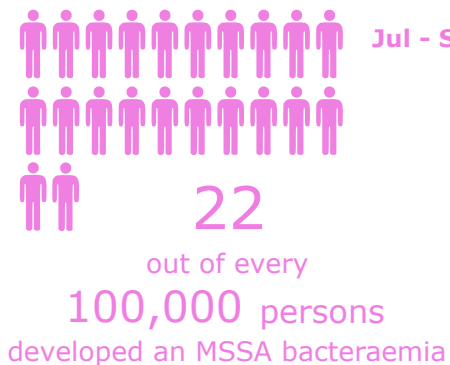


Jul - Sep 2019

Jul - Sep 2020

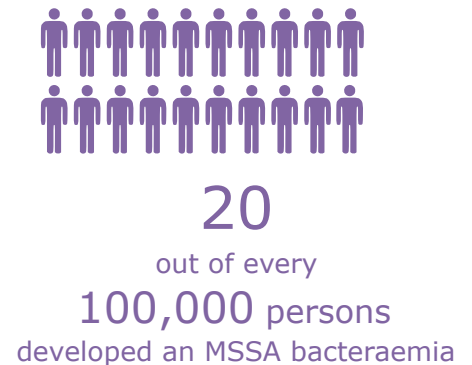


### MSSA bacteraemia

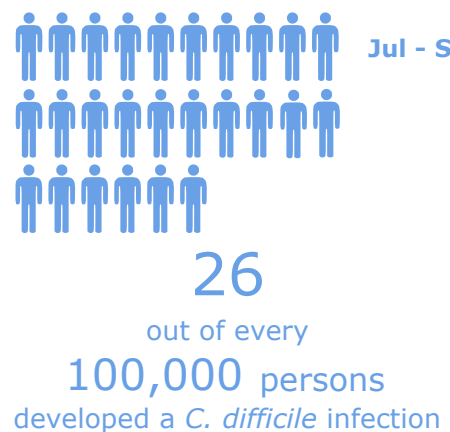


Jul - Sep 2019

Jul - Sep 2020

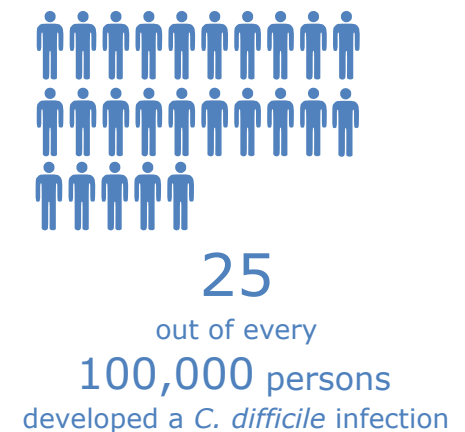


### *C. difficile* infection



Jul - Sep 2019

Jul - Sep 2020





(data up to July - September 2020)

2 of 2

## Gram-negative bacteraemias (*E. coli*, *Klebsiella* spp. and *P. aeruginosa*)

### *P. aeruginosa* bacteraemia



Jul - Sep 2019

8 out of every

100,000 persons

developed a *P. aeruginosa* bacteraemia

Jul - Sep 2020

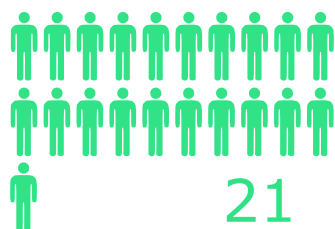


8 out of every

100,000 persons

developed a *P. aeruginosa* bacteraemia

### *Klebsiella* spp. bacteraemia



Jul - Sep 2019

21 out of every

100,000 persons

developed a *Klebsiella* spp. bacteraemia

Jul - Sep 2020

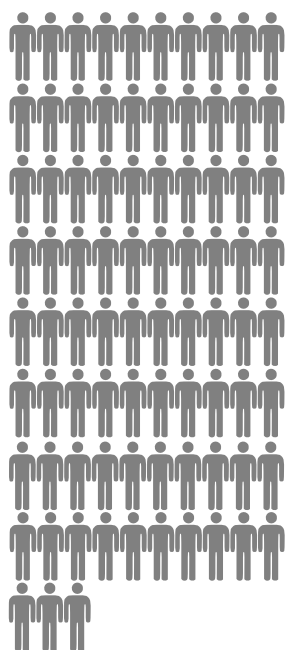


20 out of every

100,000 persons

developed a *Klebsiella* spp. bacteraemia

### *E. coli* bacteraemia



Jul- Sep 2019

83

out of every

100,000 persons

developed an

*E. coli* bacteraemia

Jul - Sep 2020

72

out of every

100,000 persons

developed an

*E. coli* bacteraemia

