



## *S. aureus* (MRSA & MSSA) bacteraemia and *C. difficile* infections

### MRSA bacteraemia

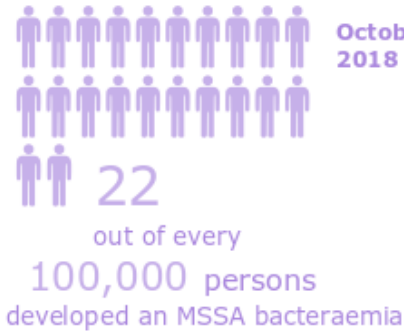


October-December  
2018

October-December  
2019

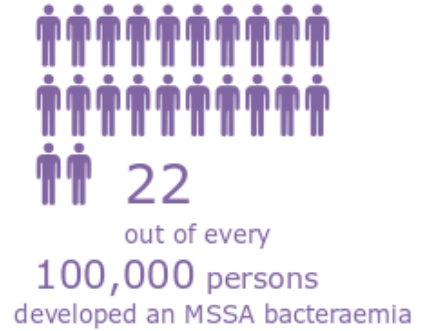


### MSSA bacteraemia

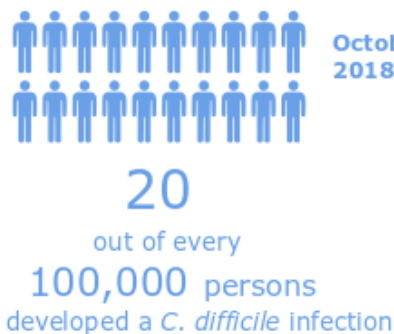


October-December  
2018

October-December  
2019

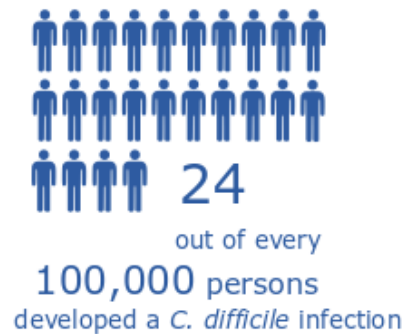


### *C. difficile* infection



October-December  
2018

October-December  
2019





# Quarterly Epidemiological Commentary: mandatory MRSA, MSSA and Gram-negative bacteraemias, and *C. difficile* infection

(data up to October - December 2019)

2 of 2

## Gram-negative bacteraemias (*E. coli*, *Klebsiella* spp. and *P. aeruginosa*)

### *P. aeruginosa* bacteraemia



October-December 2018

8 out of every

100,000 persons

developed a *P. aeruginosa* bacteraemia

October-December 2019



8 out of every

100,000 persons

developed a *P. aeruginosa* bacteraemia

### *Klebsiella* spp. bacteraemia



October-December 2018

19

out of every

100,000 persons

developed a *Klebsiella* spp. bacteraemia

October-December 2019



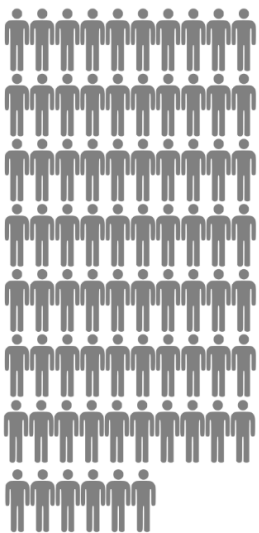
21

out of every

100,000 persons

developed a *Klebsiella* spp. bacteraemia

### *E. coli* bacteraemia



October-December 2018

76

out of every

100,000 persons

developed an *E. coli* bacteraemia

October-December 2019

75

out of every

100,000 persons

developed an *E. coli* bacteraemia

