



Test and Trace

NHS Test & Trace Serial Testing in Schools

DRAFT – FOR DISCUSSION ONLY

10 December 2020

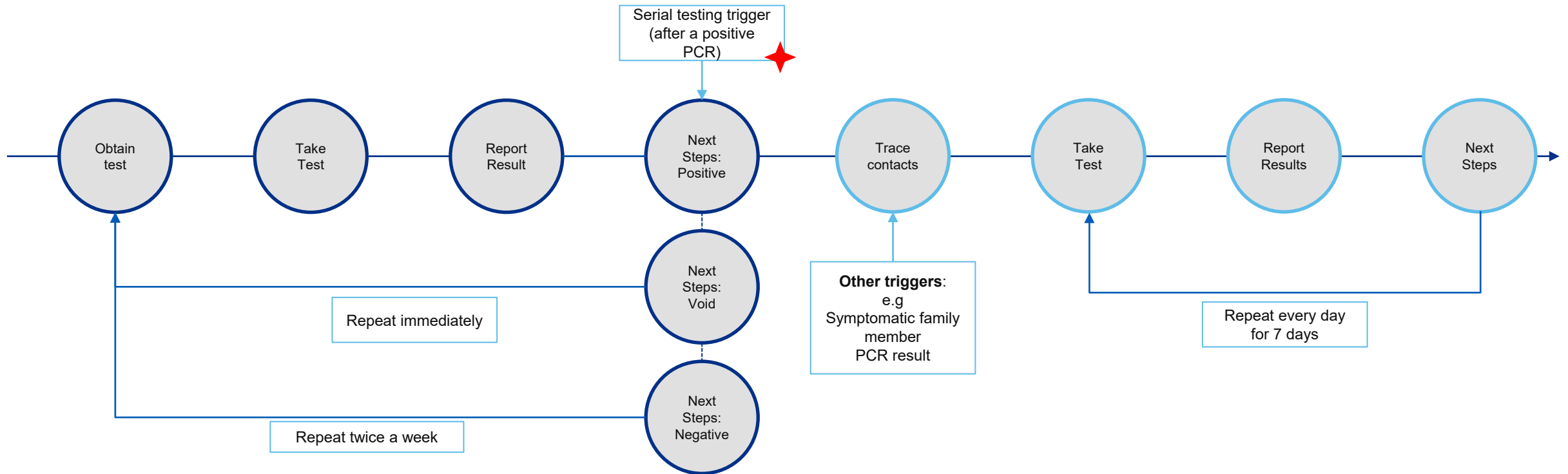
Two types of test to find are being considered for the school environments

Proactive asymptomatic testing (test to find)

Primary goal is to test and identify individuals who are Covid-19+ and asymptomatic

Reactive, targeted (serial) contact testing (test to enable)

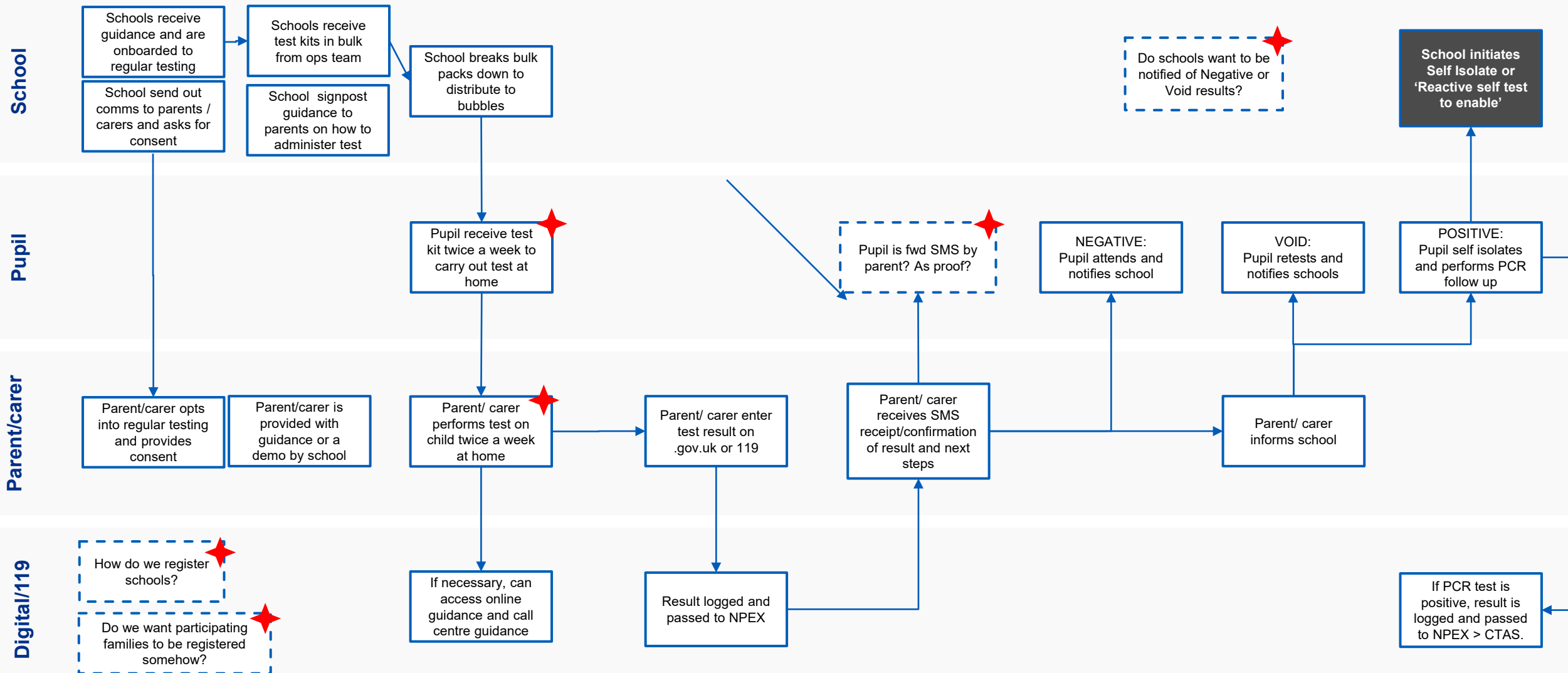
Primary goal is to ensure those who have exposed to Covid-19+ individuals (ie contacts) are not infectious and do not need to go into self-isolation



Schools: Proactive self-test to find

Regular testing at home of pupils to identify and find covid-19 cases within schools

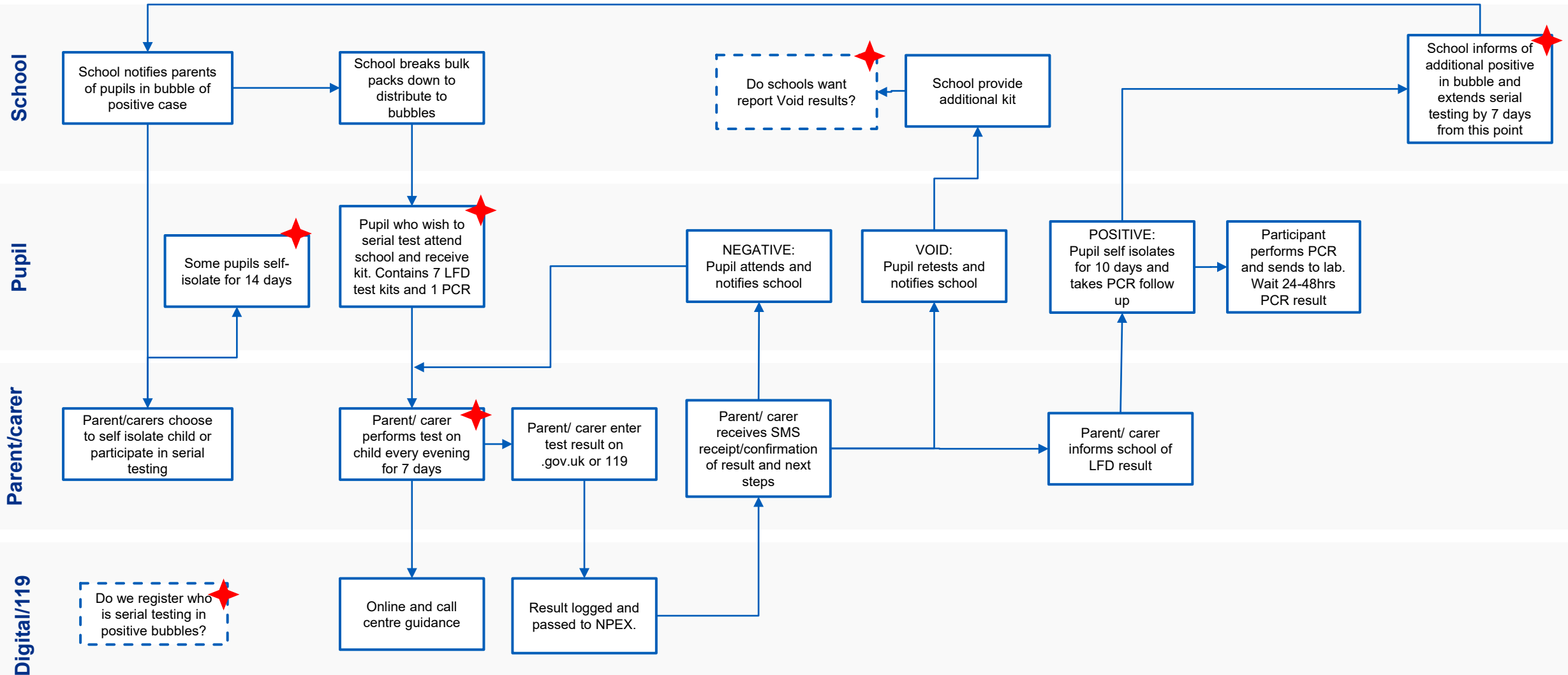
★ See questions slide 5



Schools: Reactive serial self-test to enable

Serial testing at home of case-contacts to enable to come out of self isolation

★ See questions slide 5



Design Questions	Assumption
How do parents opt into /consent to take part in serial testing (e.g. each time their child needs to take part?)	Under 16's need permission. On the basis the test is at home, they are supervising and permission is implicit
Do parents need to register in any way at the start of programme or just complete daily results reporting?	Assumed that self test reporting portal would be used in first instance with daily results uploaded.
Can parents test children the evening before, to be valid for the next day? (It may be impractical to do a test before school)	Not yet determined– require policy decision
How does the parent/student evidence they have taken a test and show school? Or is it taken on trust?	Assumption for MVS is no evidence is shown, as self-test reporting portal has no functionality to do this at present
How do schools notify Trace of a positive test and record those taking part in serial testing?	Trace are not currently notified of schools outbreak but information is passed to PHE. This would be a considerable increase in volumes of people going into Trace and requirement still needs to be confirmed.
Do students who are not self isolating need to be added into Trace?	Not yet determined – require policy decision
How do schools keep a record of students taking part in serial testing and those who are self-isolating? How do they share this with the programme?	Assumption is manual record is kept at school of teachers/students participating. How/if this is shared with Trace is still to be determined.
Operationally how does a school continue to operate if half a bubble chooses to serial test and half self isolate?	Not yet determined
Is there a cut off for serial testing if pupils in the bubble keep testing positive? (E.g 2 nd pupil tests positive at days 6 etc. Do we have a maximum of 14 days and then whole bubble self isolates instead?)	Not yet determined – require policy decision
Can test kits be given to students or would parents need to collect?	Not yet determined – require policy decision
How is reporting to the school of negative tests over a weekend completed?	Assumption is self isolation is required over non-school days
What is the policy if a student has a void test? Are they required to take a PCR test and self isolate until the result?	Assumption is a further LFD test is performed, if positive a confirmatory PCR is taken
How do we treat for individuals (supply teachers) who test positive through a PCR and have come into contact with multiple schools?	Trace establishes close contacts. Those within schools can opt into Serial Testing.