

ch

TTCE Update – Data and Insight

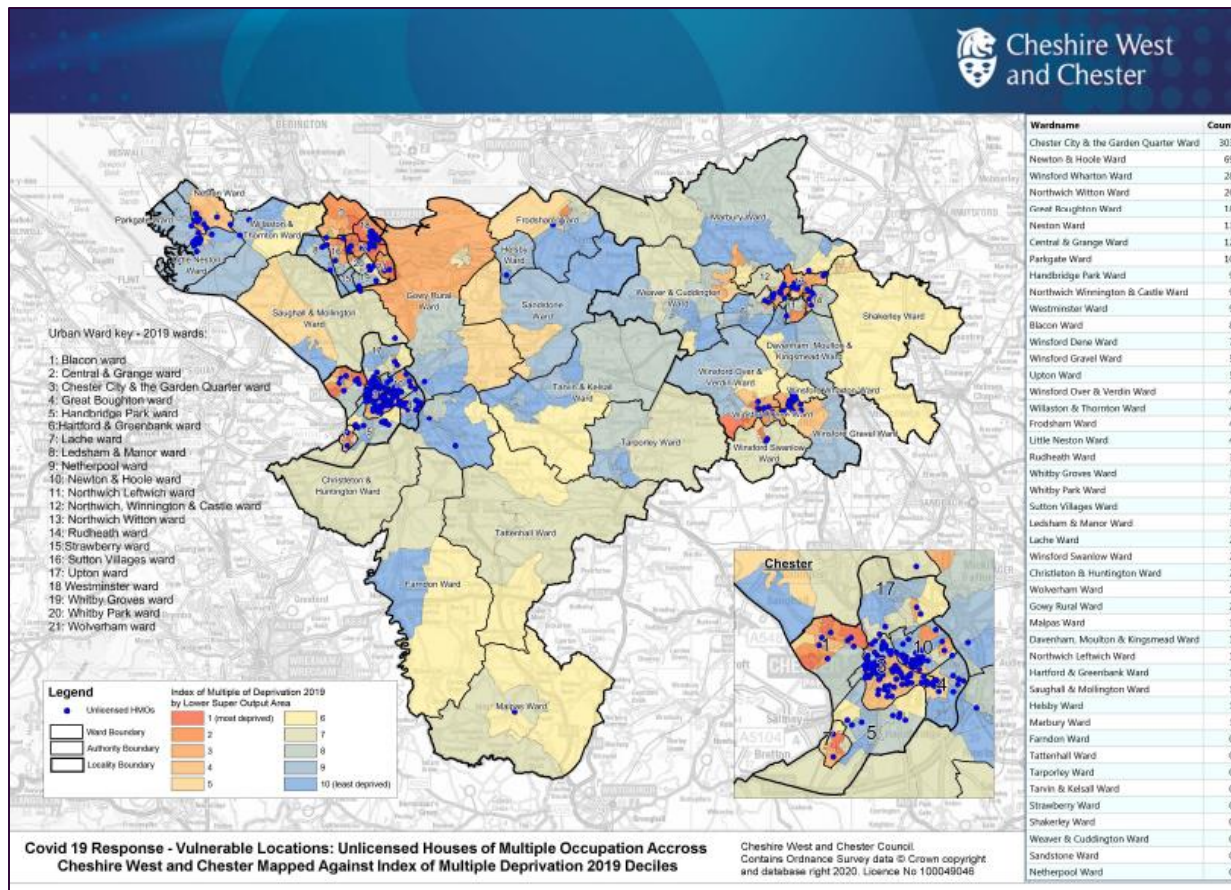
Councillor Louise Gittins



Our Priorities

- Data that provides actionable insights
- Timeliness
- Using track and trace local data (postcode data now available) to inform decision making
- Data sharing and information governance
- Streamlining of data sources or comprehensive and up to date directory of where to find what data sources
- Increasing publicly available data and intelligence

Starting to understand the risks – hotspot mapping

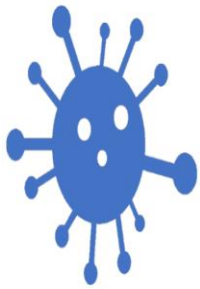


Mapping complex settings...

- Map shows that we have over 600 unlicensed houses of multiple occupation.
- Mostly in built-up areas but also some in deprived areas and rural communities

Covid Interactive Information Portal

Cheshire Covid Cohort Portal



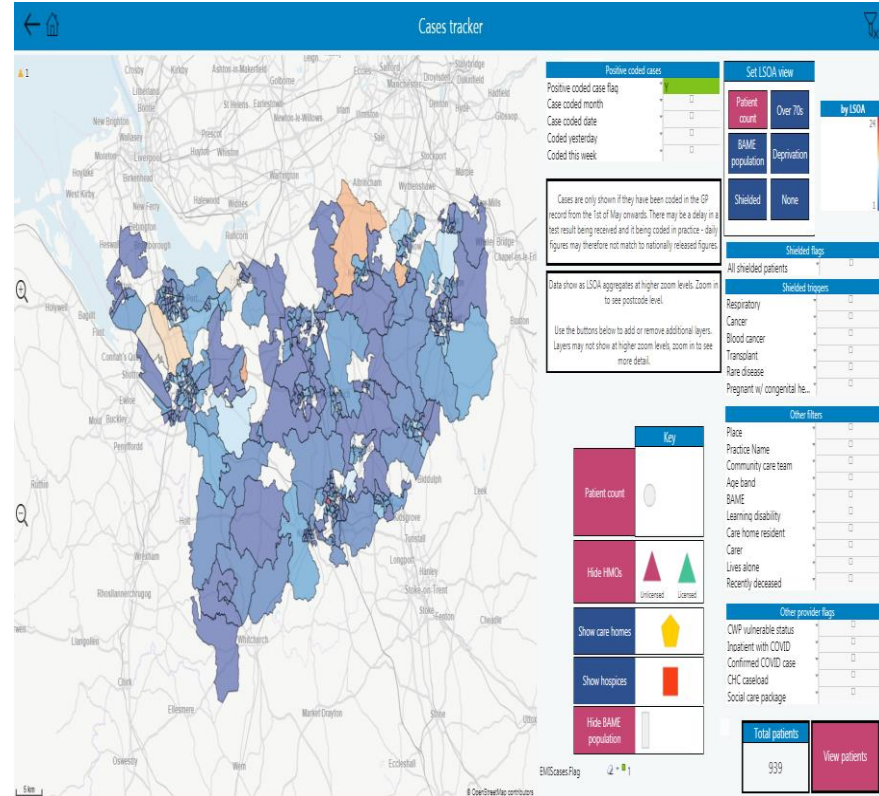
Cases Tracker

Shielding Changes

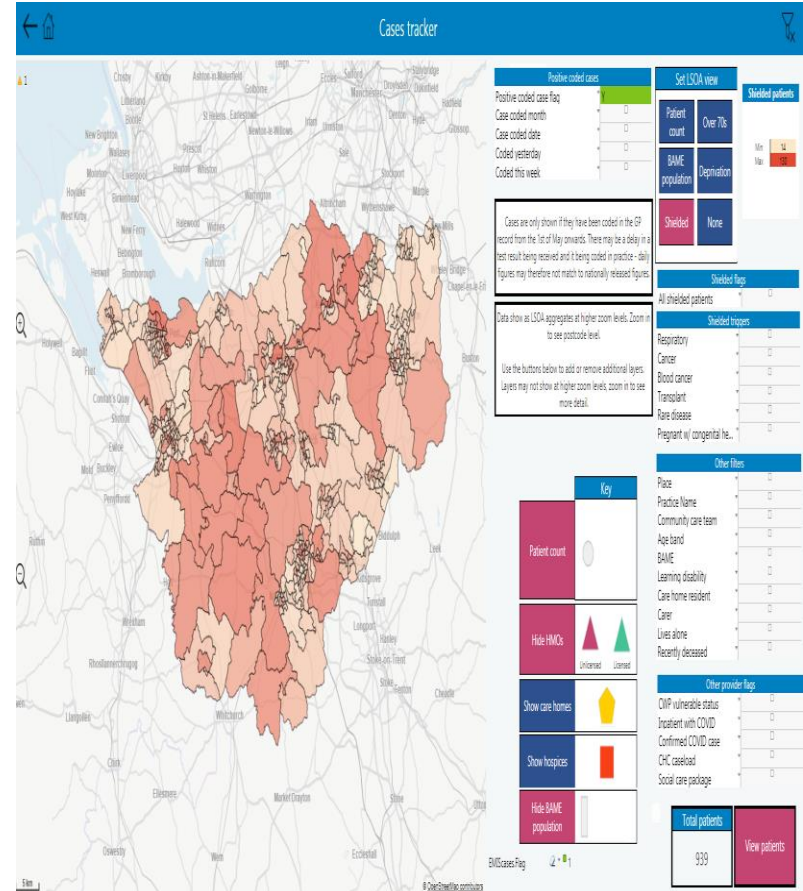
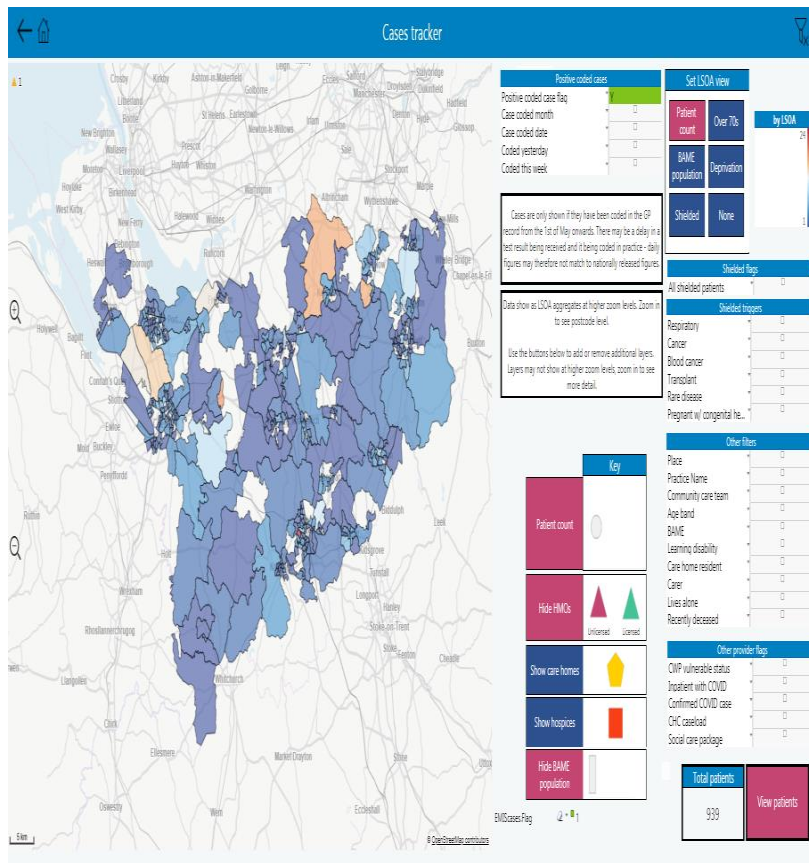
Cohort Identifier

Notes

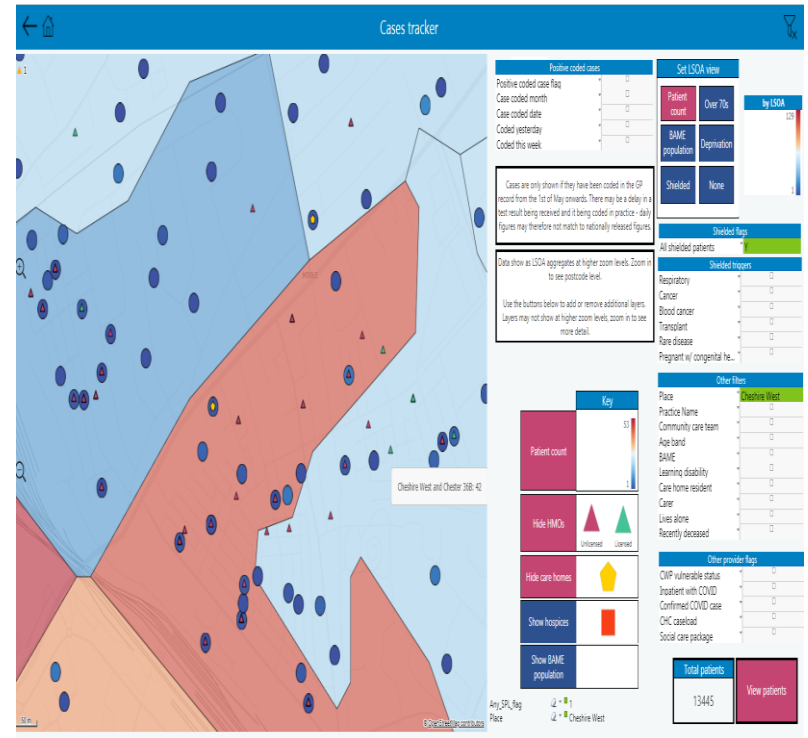
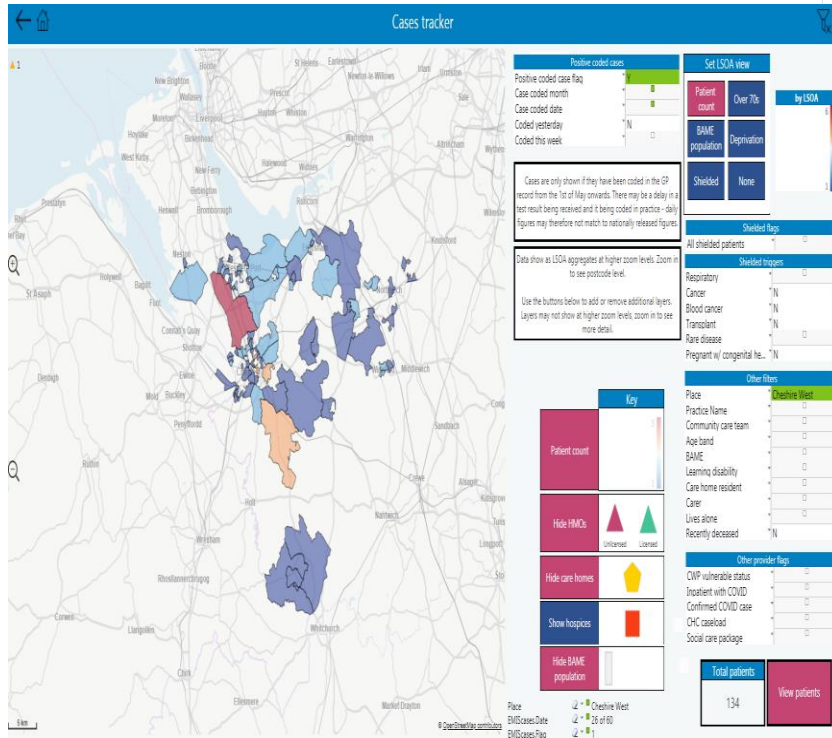
- Patients who have opted out of data sharing are not included
- Cases are only shown if they have been coded in the GP record from the 1st of May onwards. There may be a delay in a test result being received and it being coded in practice - daily figures may therefore not match to nationally released figures
- Patients are identified as shielded if they were included in the list of shielded patients disseminated by NHS Digital on 07/04/20 and subsequent releases, as well as lists submitted to the Rf team from providers
- There are additional filters available based on the criteria flagged by NHSD as the reason for their shielded status
- If you have any questions or additions please contact wccg.bi@nhs.net



High Level Mapping



Connecting Data



Sharing data with the public

Covid-19 Key data for Cheshire West and Chester



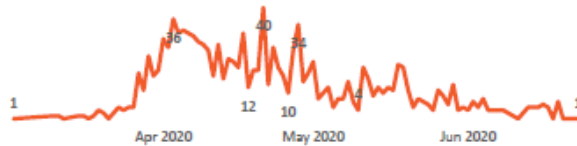
Key metrics driving our response

Note: All data relates to Cheshire West and Chester unless otherwise stated.

Daily number of Covid-19 diagnosed infections (Source: <https://coronavirus.data.gov.uk>)
Note: Data has a 2 day lag due to the time between specimen date and lab results

Daily count as at:
23 June 2020

8



Total cumulative Covid-19 diagnosed infections. (Source: <https://coronavirus.data.gov.uk/>)

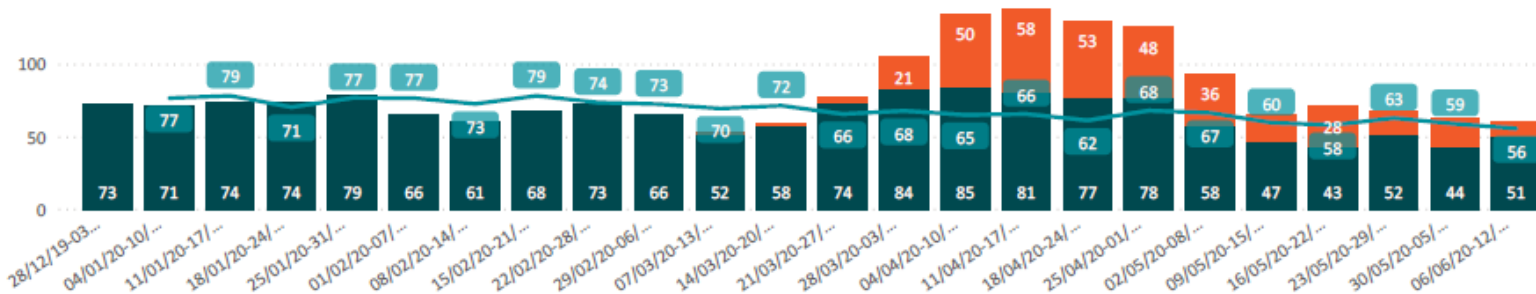
Total count as at:
23 June 2020

1236



Weekly number of Covid-19 and other deaths, in comparison to the average number of deaths from 2014 to 2018. (Source: ONS)

● Other deaths ● COVID 19 deaths ● Avg deaths 2014 to 2018





Key Lessons

- Use all the resources at your disposal – working with health colleagues has been invaluable to access GP level testing data
- Data that can guide action is valuable – and we need to keep this at the centre of our response
- This data needs to be shared with our communities to provide assurance
- We also need to earn the trust of communities through robust data protection arrangements and proactive communications.