

Reeve, Louise

From: Reeve, Louise
Sent: 10 December 2020 19:54
Subject: LARIA North East Newsletter - December 2020

Laria

Local Area Research + Intelligence Association

The Laria North East Newsletter

December 2020

This is the 38th LARIA North East newsletter, and the final one of 2020. It was great to see everyone at the LARIA NE networking event last week! More will follow in 2021. Read on to find out more.

If you've got any examples of research and information work you're doing that you'd like to share, or resources you've found useful, please email me and I'll be happy to include them here.

This newsletter is put together by Louise Reeve, the North East regional organiser, and sent to all LARIA North East members and associate members. It is also sent to LARIA members in Yorkshire and Humber. If there's something you'd like to see in the newsletter, contact me here:

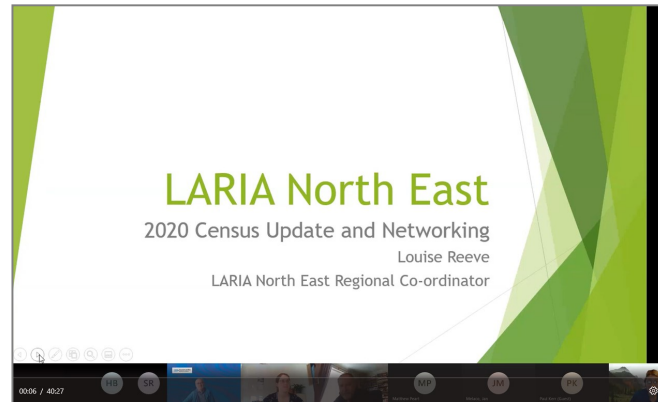
louise.reeve@newcastle.gov.uk. (If you would like to unsubscribe from this newsletter in future, please email me at: louise.reeve@newcastle.gov.uk)



Updates from LARIA

LARIA North East Event 1 December 2020

With 10 of us attending via Teams, it was good to catch up! Louise Reeve (LARIA North East Organiser) led with a presentation on 'The Census: What's New, and What's In It for You?', describing how ONS plan to increase digital participation in Census to 75% in 2021, and get the data outputs to users in a way that works best for them.



We discussed both plans for the Census, and issues that members were facing and expect to face in future, such as:

- For some attendees, the challenge of successfully carrying out their regular role whilst at the same time completing a [Data Analyst Apprenticeship](#) – and whether local authorities have fully embraced data science and what it can offer us.
- The extent to which local authorities are able to do 'in-depth' or 'proactive' research, rather than reactive research.
- How we will manage workloads in 2021 when tasks that were put on hold during the pandemic have to be caught up with.
- The difficulties of keeping up with what's happening when no-one's in the office – and how we're looking forward to hopefully getting back into it in 2021.
- The logistical difficulties of the upcoming vaccination programme.
- The opportunities offered by Census 2021, particularly for those of us managing data platforms such as [Durham Insight](#).

Despite the challenges, all agreed it was good to catch up. We'll have another event soon!

LARIA Virtual Spring Conference 2021

The LARIA Events working group met on 10th December 2020 to plan the next year's virtual LARIA Conference in the spring. Watch this space!

Spotlight – Linking Together Dwelling Datasets

When asked, someone commented that a topic they'd like to see discussed at a future LARIA North East networking event was "I've been doing some work with dwelling stock data. I'm now thinking about how I can link my dataset to other datasets to add value. Has anyone else tried this?" I threw this open to discuss on the LARIA Knowledge Hub Forum and received this helpful reply from Martin Burroughs, Geographic Information Manager at Oldham Metropolitan Borough Council:

"We join our Council Tax system to the LLPG (Local Land and Property Gazetteer), which gives us decent mappable data and vacant properties and so on. This can be a bit difficult, as the crossreferences don't seem to be as clean as they could be – I don't know if that's a Geoplace issue or a local one! I used to link to [Stock Condition Survey](#) data, but they have reduced the sample size so much I'm no longer convinced it's worthwhile. We certainly see Council Tax as the centre of all things!"

Events and Training Opportunities

NCRM 'Adapting Social Research Methods' webinars

'Social Research Methods Suited or Adapted to Covid-19 Times' - 28 January 2021. This first webinar focuses on adapting or selecting particular methods: interviews, surveys, participatory, sensory, creative and ethnographic

methods. Click here to book: [Social Research Methods Suited or Adapted to Covid-19 Times](#)

'Emerging Issues in Changing Research Practices for Covid-19 Times' - 11 February 2021. The second webinar focuses on what is methodologically at stake in Covid-19 and issues being discussed and resolved by the research community: [Emerging Issues in Changing Research Practices for Covid-19 Times](#)

NIHR: Pre-Doctoral Fellowships for Local Authority and LA Commissioned Service- Based Individuals

This pilot scheme is being designed, alongside a companion doctoral fellowship scheme, to support individuals based in local authorities or local authority commissioned services to develop as health and/or social care researchers.

The scheme will fund individuals of any profession to undertake Masters level academic training and prepare an application for a doctoral fellowship whilst retaining their existing employment and practice. Find out more here: [NIHR Fellowships](#)

Useful Links and Resources

Impact of Covid-19 on our lives

[COVID-19's impact on our lives](#) - Partner studies at the **ESRC**-supported CLOSER hub at UCL have launched questionnaires to [survey over 100,000 participants about the impact of COVID-19](#) on their lives

UKRI Pages

[Tackling the impact of COVID-19](#) - New **UKRI** web pages covering every aspect of the virus, from vaccine development to its effect on our health and wellbeing

